



ICPALD



# SECURING PASTORAL LIVESTOCK MOBILITY AND LIVELIHOODS

LESSONS FROM IGAD INITIATIVES, PROTOCOL ON  
TRANSHUMANCE AND MAPPING OF TRANSHUMANCE  
CORRIDORS & RESOURCES



Japheth Kasimbu – IGAD Transhumance Expert

# OVERVIEW OF PRESENTATION

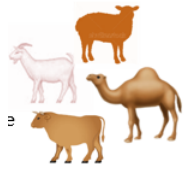
1. Overview of IGAD Region – IGAD Countries
2. The State of Livestock in IGAD region
3. Hazards & Challenges Posed by CC to Pastoralists
4. Initiatives by IGAD towards Securing Pastoral Livelihoods
5. IGAD Protocol on Transhumance
6. Transhumance Mapping Process

# IGAD COUNTRIES

- Inter-governmental Authority on Development (IGAD) is a regional economic community comprising of eight (8) member states: Djibouti, Eritrea, Ethiopia, Kenya, Somalia, South Sudan, Sudan and Uganda;
- Intergovernmental Authority on Drought and Dvt (IGADD) was founded in 1986 and later superseded by Intergovernmental Authority on Dvt (IGAD) in 1996



# LIVESTOCK POPULATION STATUS AND CATTLE RUSTLING FIGURES



TOTAL LIVESTOCK POPULATION (IGAD)

**532 Million**



OCCUPIED LAND MASS (AFRICA)

**40%**



OCCUPIED ASAL (IGAD)

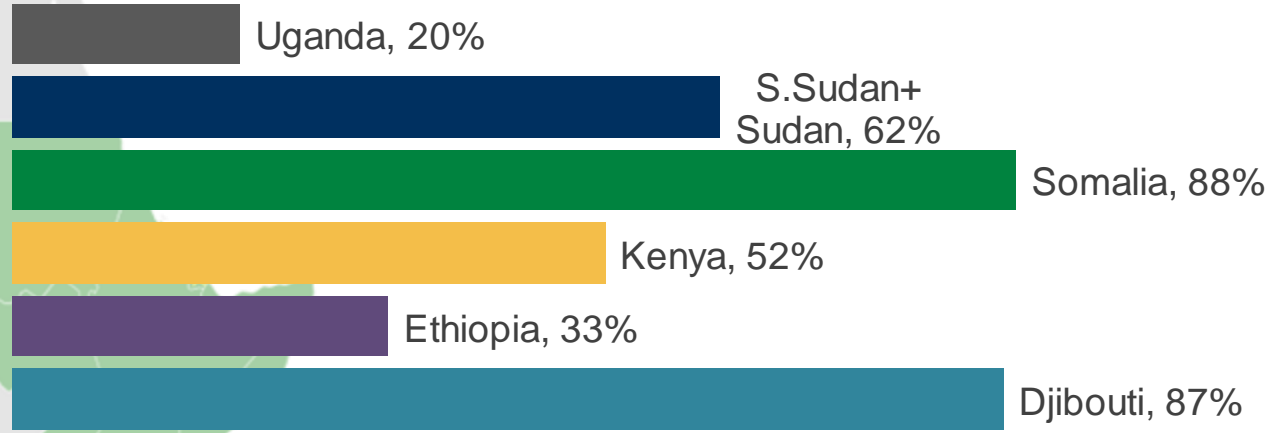
**70%**



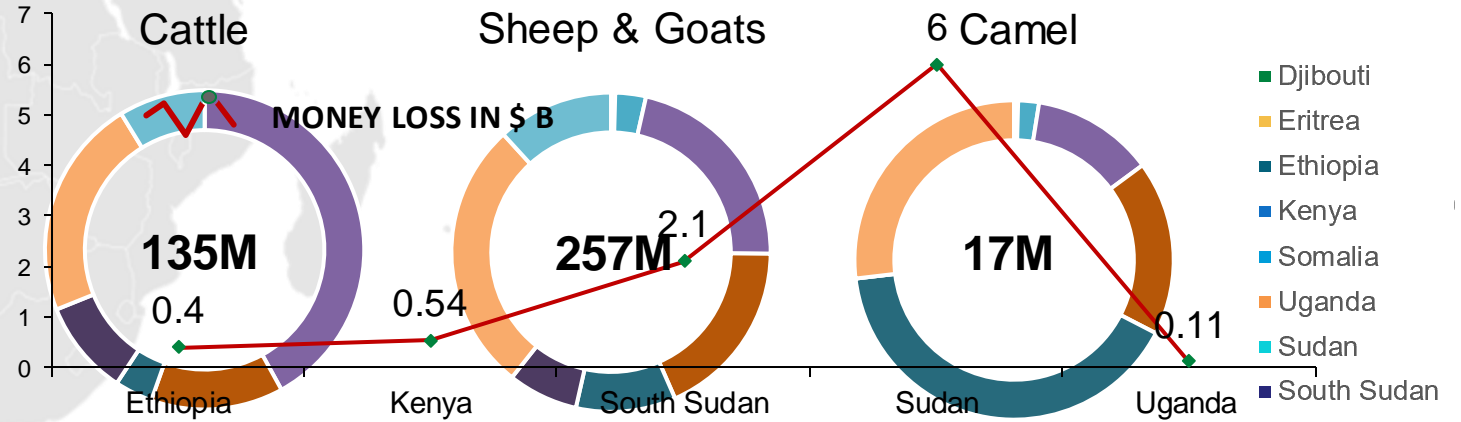
CONTRIBUTION TO AGRICULTURAL GDP

**20-30%**

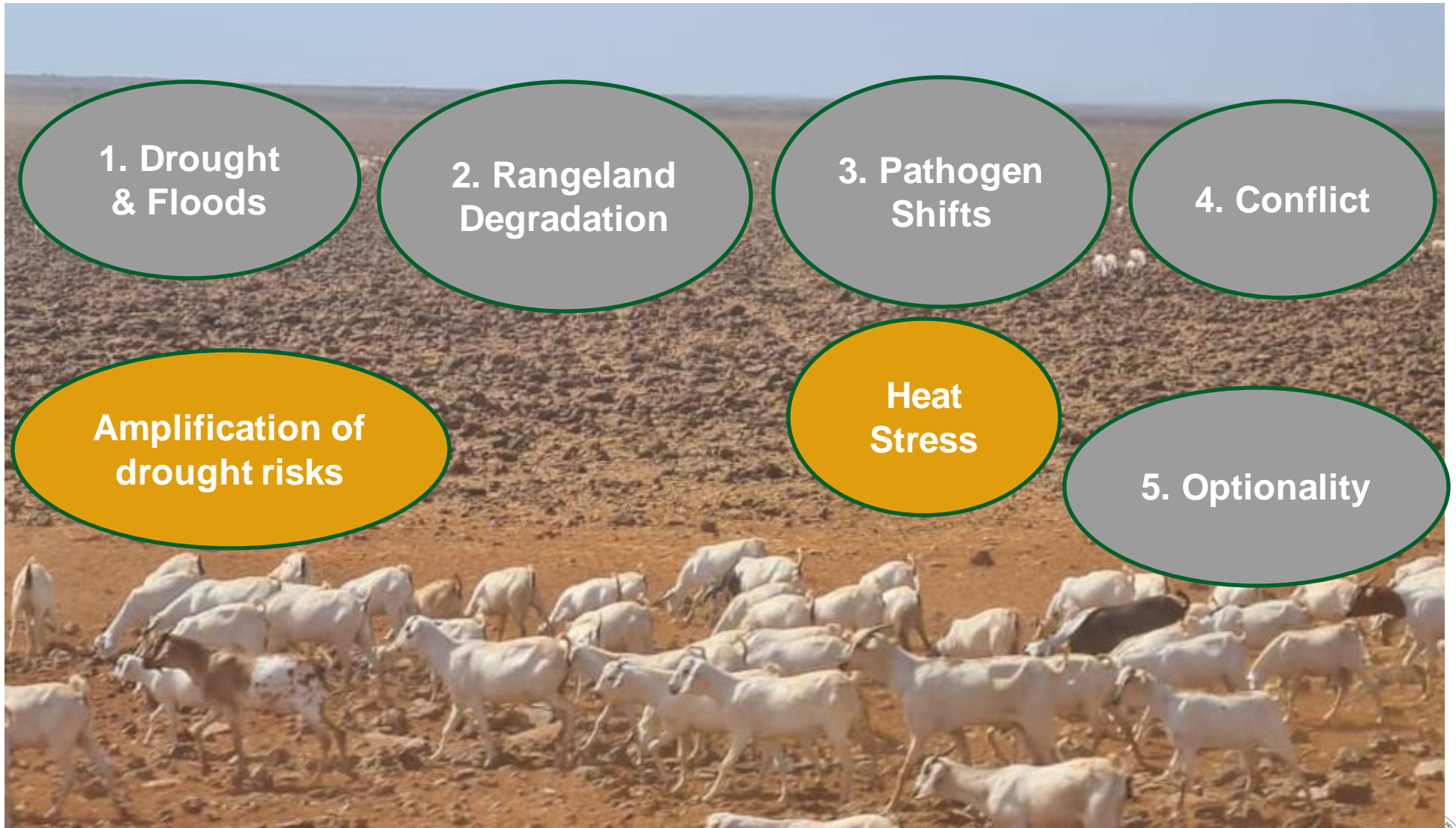
## CONTRIBUTION TO GDP



## SOCIO ECONOMIC IMPACT OF CATTLE RUSTLING

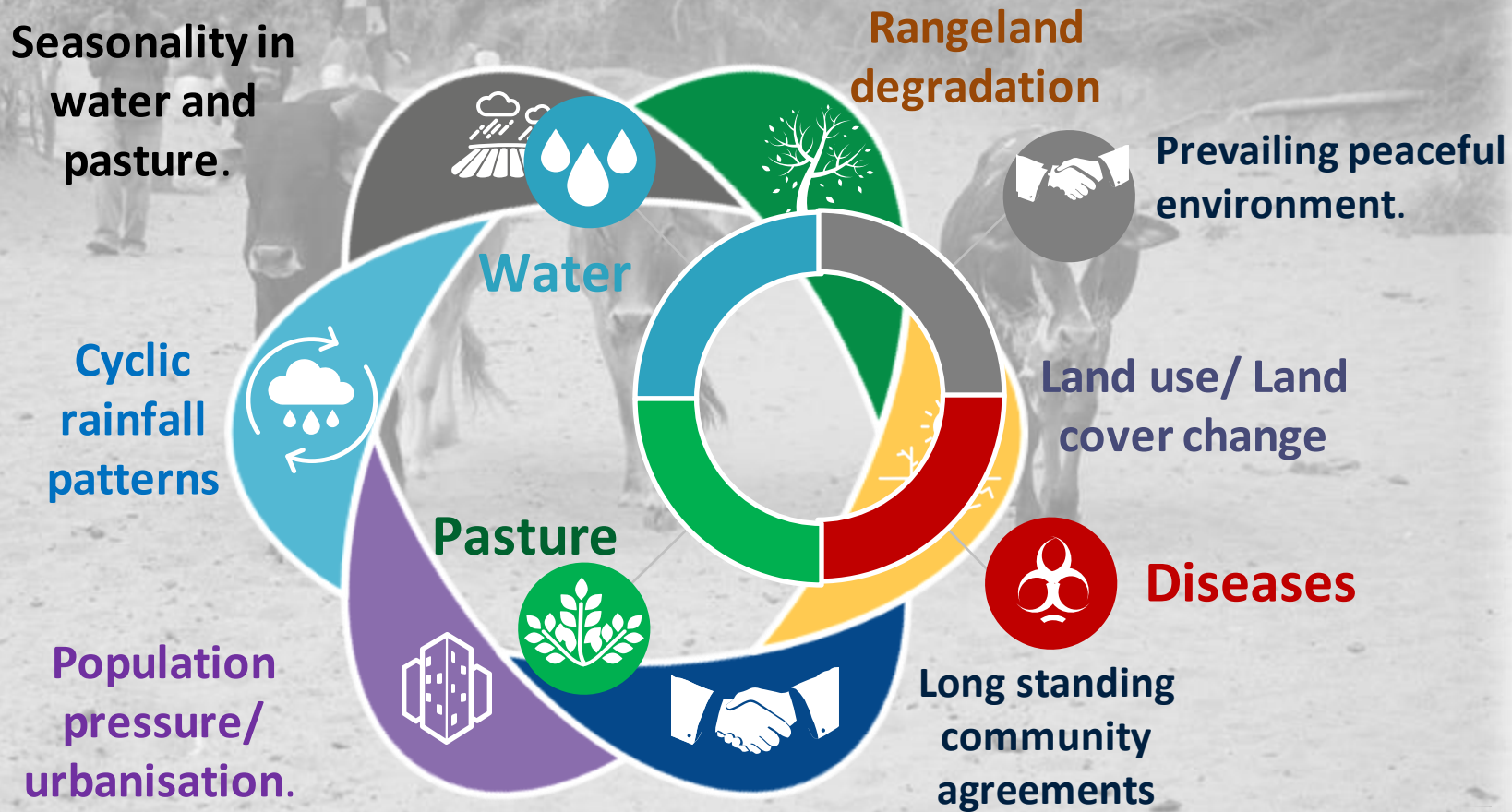


# Hazards & Challenges Posed by CC to Pastoralists



# INTRICATE BALANCE ON CROSS BORDER ENVIRONMENT

## Intricate Balance

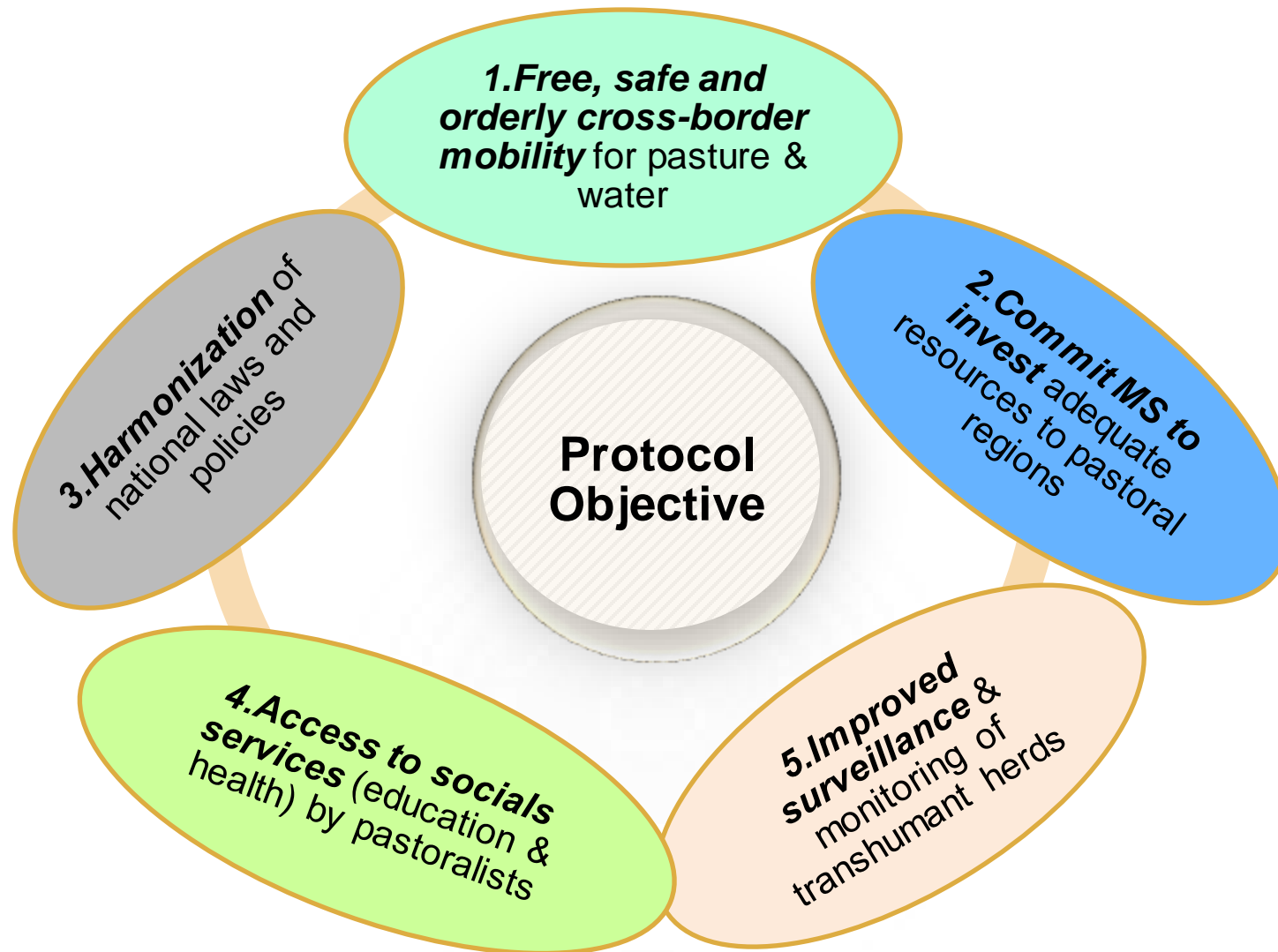


# IGAD RESPONSES / INITIATIVES TO PASTORAL LIVELIHOODS

- Establishment of IGAD Centre for pastoral areas and livestock development (ICPALD) by the 45th Ordinary Session of the IGAD Council of Ministers in 2012
- Pastoral Early Warning Systems and Early response through **GHACOF** – integration of climate forecast implications on pastoral livelihoods into regional advisories, recommendations and planning
- Enhanced policy environment
  - Bilateral & multilateral cross border animal health MOUs in the region
  - IGAD Protocol on Transhumance

Used various tools and strategies for early warning and prioritization of interventions

# IGAD PROTOCOL ON TRANSHUMANCE<sup>(1)</sup>



INTERGOVERNMENTAL AUTHORITY ON DEVELOPMENT



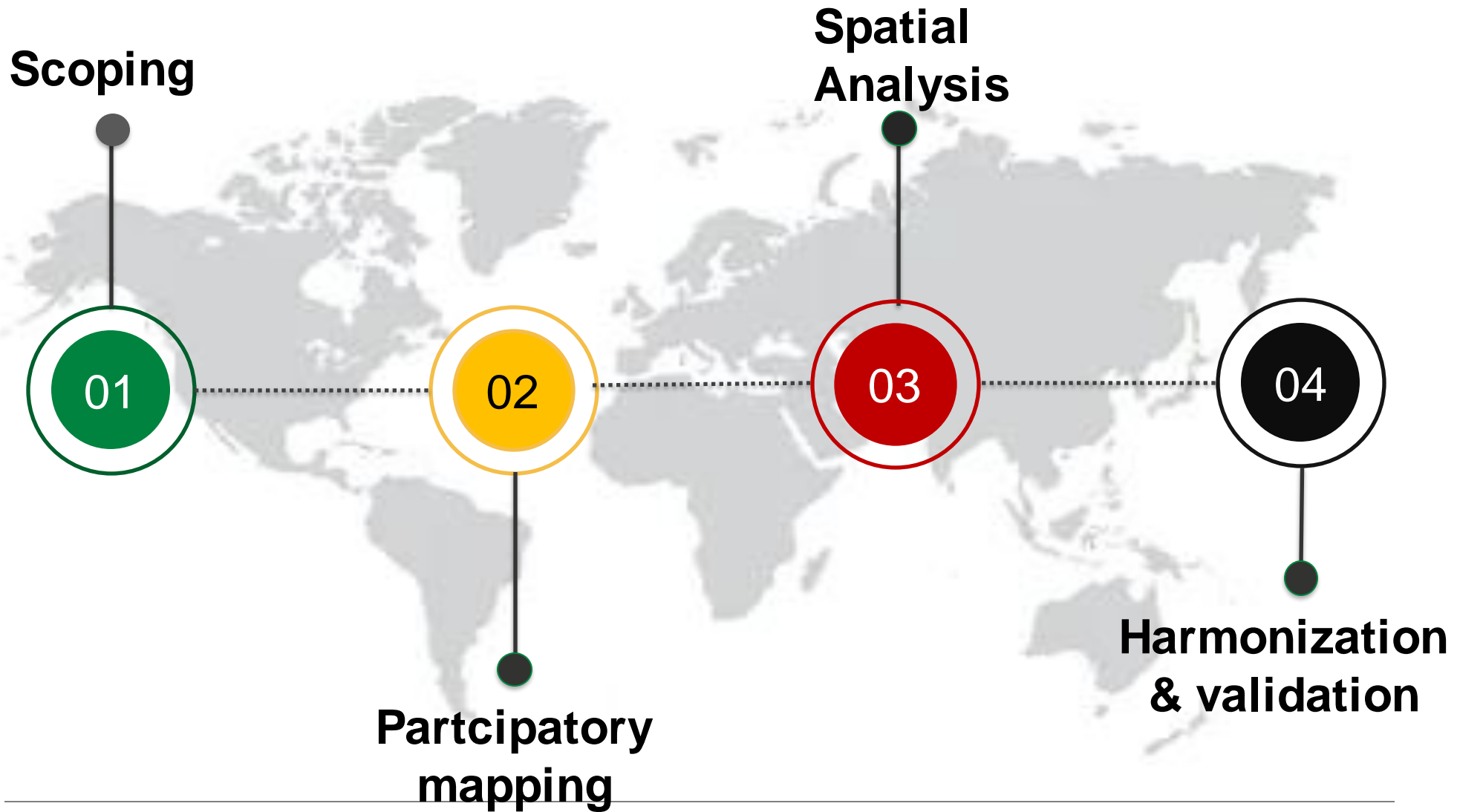


# IGAD PROTOCOL ON TRANSHUMANCE<sup>(2)</sup>

- Protocol and ITC Endorsed by IGAD Committee of Ambassadors in February 2020
- Roadmap for Implementing the TP Adopted by Sectoral Ministers in November 2020
- Protocol adopted by the 72<sup>nd</sup> Extraordinary Session of Council of IGAD Ministers of FA in June 2021
- Protocol now being signed and ratified Member States
- Mapping of transhumance corridors in IGAD Clusters



# TRANSHUMANCE MAPPING PROCESS



# Participatory Mapping Process

## Scoping



Karamajong,  
Turkana, Dasenech,  
Gnangatom,  
Hamer, Burji, Garii,  
Borana, Gabra &  
Rendile, Oromia,  
Somali



**Government**



**Subject matter specialists**

## IO and NGO

VSF G/B, NDMA, SND,  
FAO, Mercy Corp, GIZ,  
KDF, UNDP



**220** Stakeholders  
engaged



## Spatial Analysis

- Transhumance routes
- Embarkment/resting areas/exit and entry points.
- Watering areas
- Seasonal Grazing areas

- Conflict hotspots
- Resource management plans
- Conflict management plans

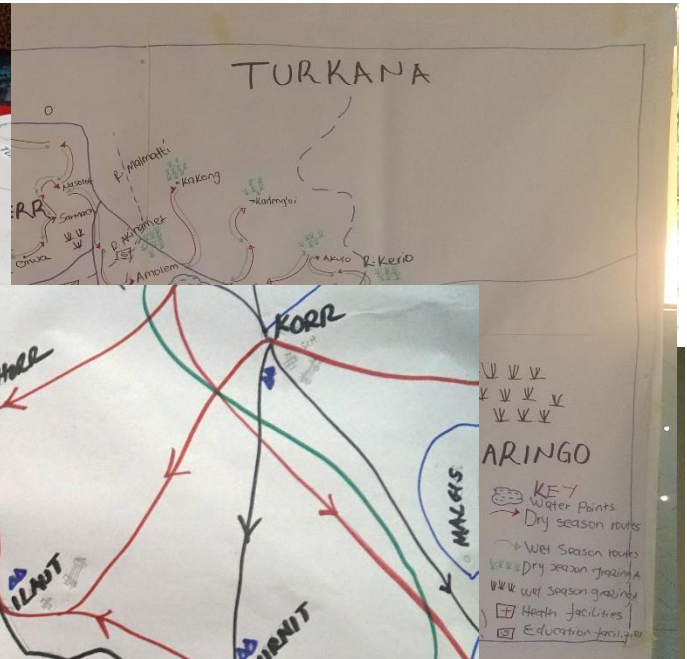
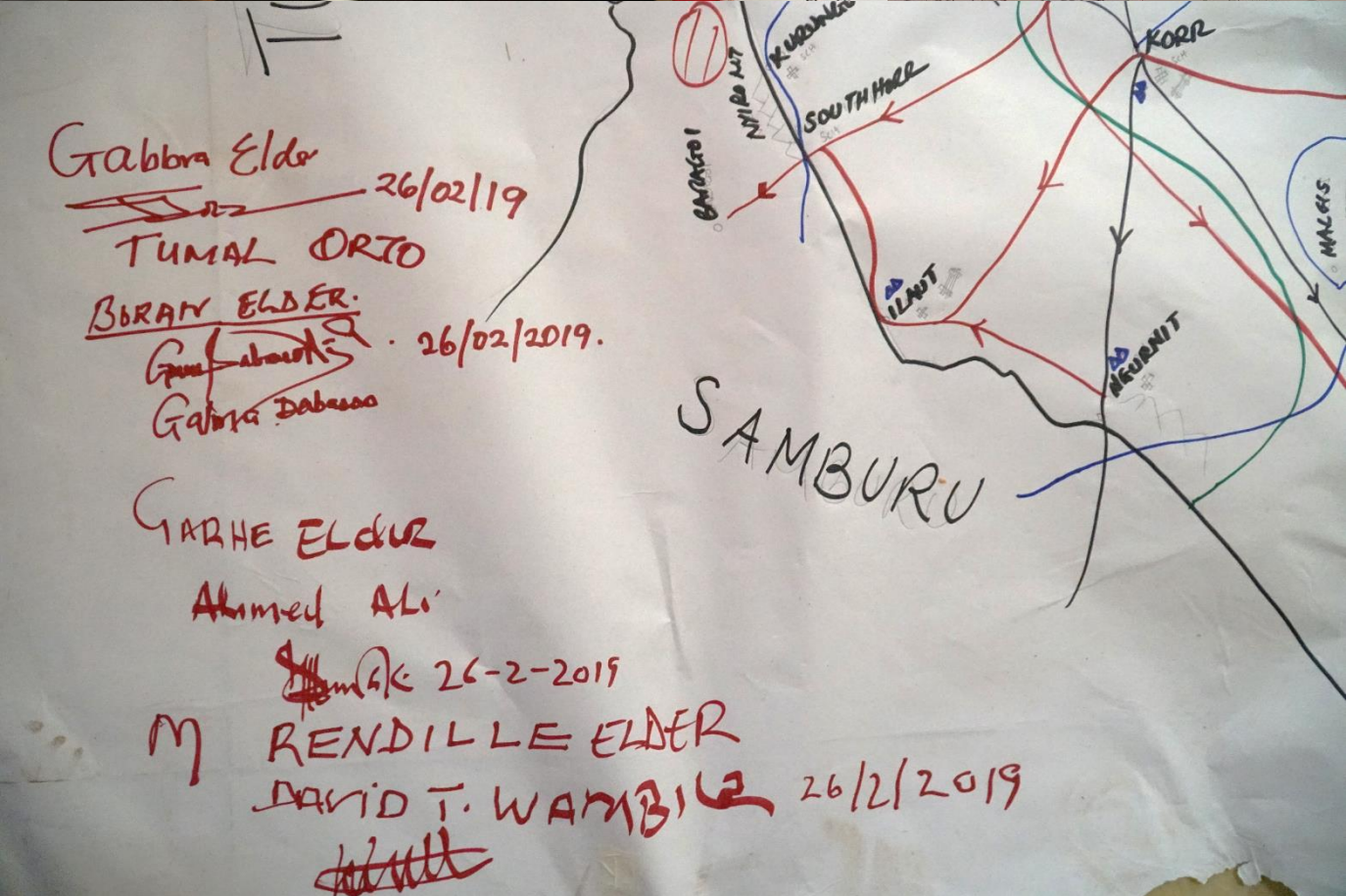


Gabbra Elder  
 26/02/19  
 TUMAL ORTO

BIRAY ELDER  
 26/02/2019.  
 Gabira Dabasso

GARHE ELDER  
 Ahmed Ali  
 26-2-2019

M RENDILLE ELDER  
 DAVID T. WAMBILE 26/2/2019



## Scoping

## Spatial analysis

## Spatial Analysis

01

- Delineation of transhumance routes and resources

- Rangeland profiling and characterization
- Accessibility index

04

Multi temporal  
criteria Analysis

Spatial correlation  
(Rainfall + biomass)

Harmonization  
& validation

# Harmonization & validation Scoping

# Spatial Analysis



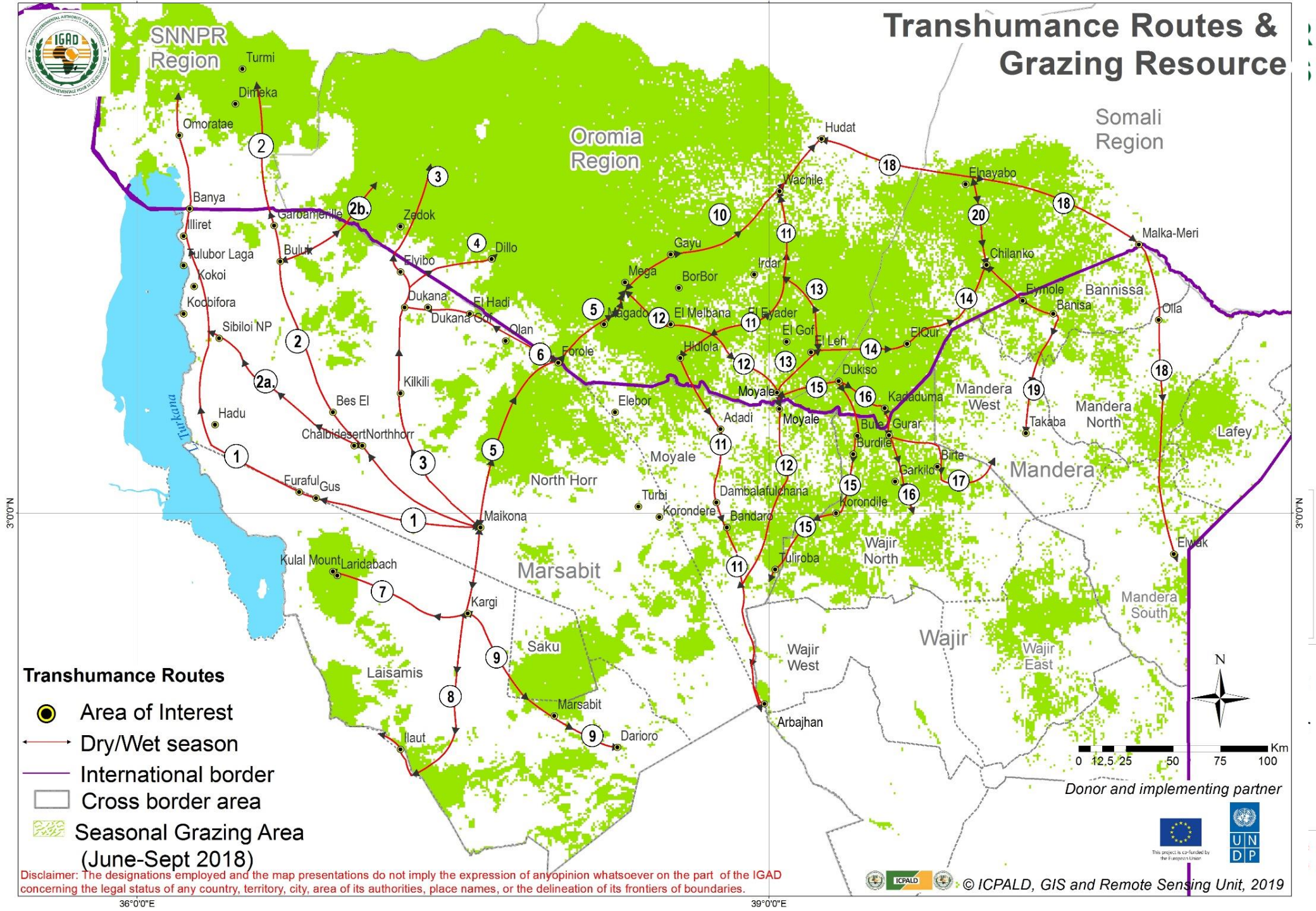
- Cross-border meetings
- Gallery walks
- Finalization of the draft products



## Harmonization & validation



# Transhumance Routes & Grazing Resource



SNNPR Region

Oromia Region

Somali Region

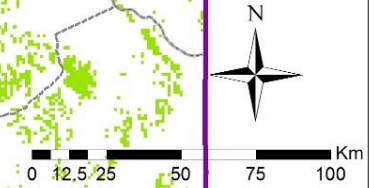
Marsabit

Mandera

Wajir

## Transhumance Routes

- Area of Interest
- Dry/Wet season
- International border
- Cross border area
- Seasonal Grazing Area (June-Sept 2018)



Donor and implementing partner

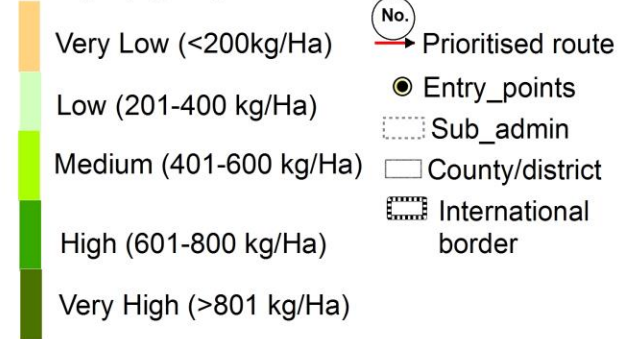


Disclaimer: The designations employed and the map presentations do not imply the expression of any opinion whatsoever on the part of the IGAD concerning the legal status of any country, territory, city, area of its authorities, place names, or the delineation of its frontiers of boundaries.

# WATER ACCESSIBILITY AS A FACTOR

## Dry season rangeland conditions: June-Aug 2019 adjusted to accessibility index

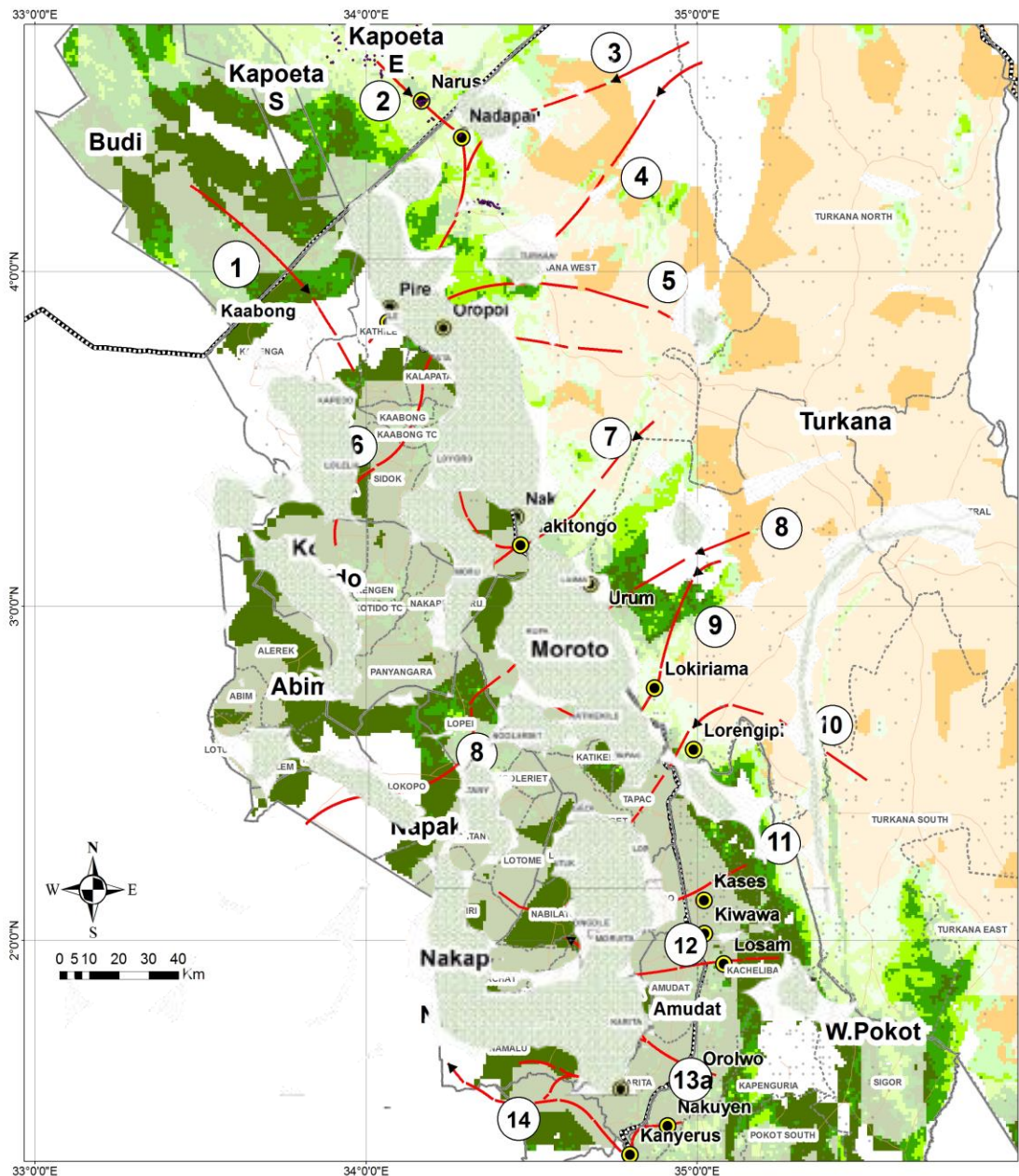
### Forage (kg/Ha)



Slope(%)	Distance(km)	Preference level	Reduction on grazing capacity (%)
0-10	0-10	1	0
11-30	11-15	2	30
31-60	16-20	3	60
>60	>20	4	100

Transhumance routes are based along predefined routes through which pastoral communities have long since used in search of water and pasture during the dry season. These earmarked prioritized cross border routes are ment to serve as possible conduits of investments for purposes of corridor development towards the realization of the IGAD Transhumance Protocol

Disclaimer: The designations employed and the map presentations do not imply the expressions of any opinion whatsoever on the part of the IGAD concerning the legal status of any country, territory or other areas of the authorities, place names, or the delineation of its frontiers of boundaries

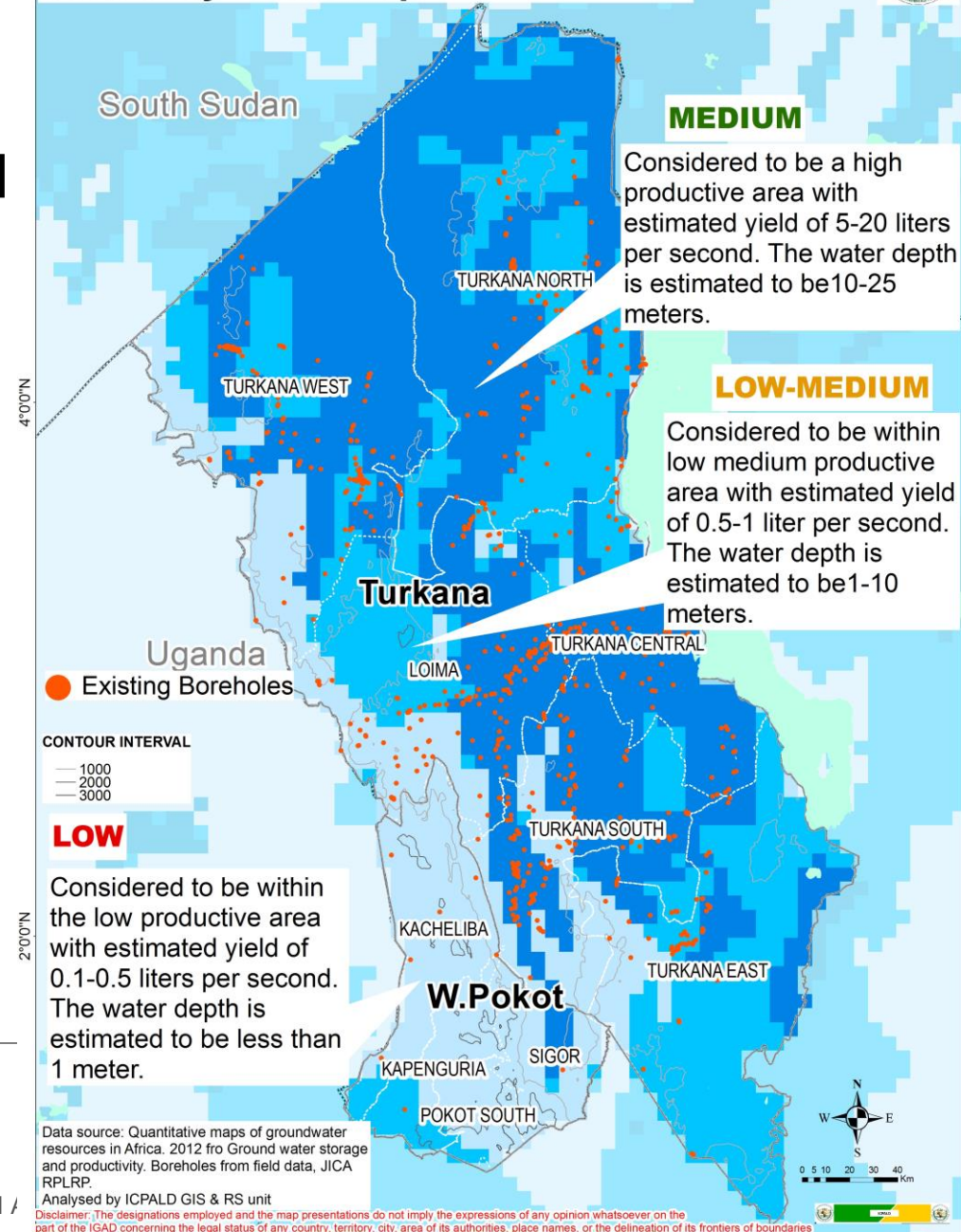




# ROLE IN CORRIDOR DEVELOPMENT

- Address issue of supply/demand
- Targeted investment
- Early warning for early action
  - Rangeland early warning and forecasting system- 2021
  - Downscaled climate data- 2021.
  - Conflict early warning
- Coordinated programming.

## Ground Water Productivity/Storage Suitability Index Map



# REMOTE FIELD DATA COLLECTION USING MOBILE GIS APPS

## Resilience Enhancing Investments for Agropastoral & Pastoral Communities

No. Investments

**3,226**

ETHIOPIA  
**61**

KENYA  
**1,568**

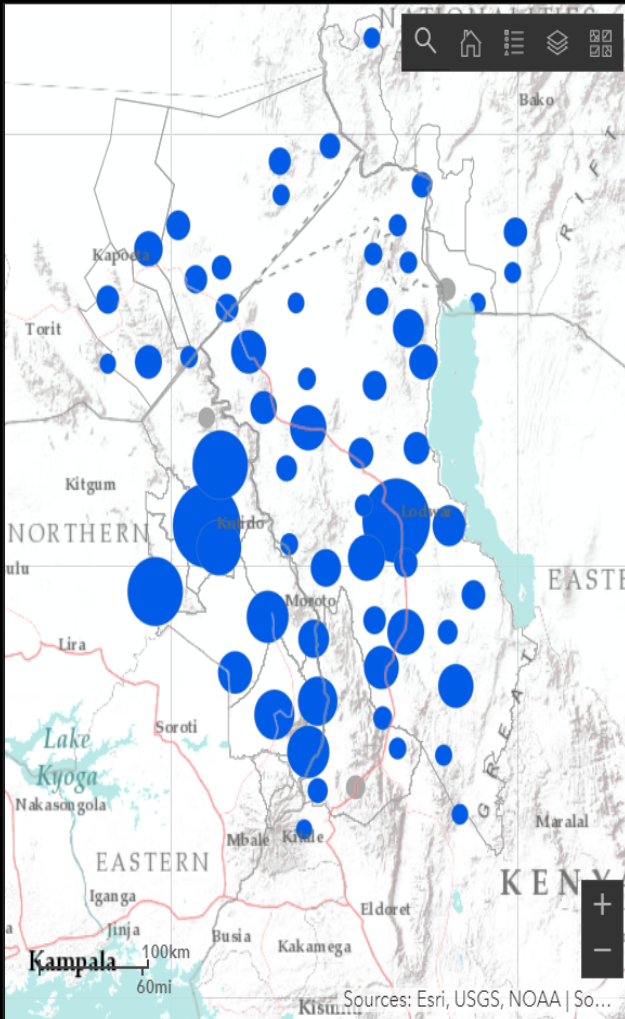
SOUTH  
**303**  
SUDAN

UGANDA  
**1,294**

### Legend

#### Investments2020

- Water development
- Livestock marketing & trade
- Rangeland/Fodder
- Livelihoods
- Support
- Animal health support & services
- Training center
- Road infrastructure
- others

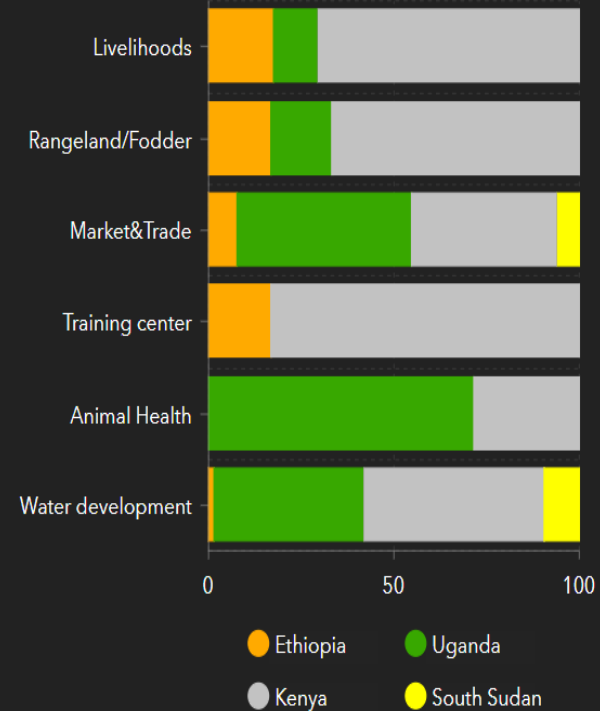


### Select Area of Interest

- Abim, UGA
- Budi, SSD
- Kapoeta East, SSD
- Kapoeta North, SSD
- Kapoeta South, SSD
- Amudat, UGA
- Moroto, UGA

Filters out the investments within the administrative layer

### Investment profiling per country



### Rangeland

Fodder & seed  
**19**  
Production

Bush  
**2**  
Control

### Market &

Livestock  
**29**  
Market

Slaughter  
**3**  
House

Holding  
**4**  
Ground

Slaughter Shed  
**11**

### Water

BoreHole  
**2,779**

Water Pan  
**30**

Sand  
**11**  
Dam

Valley Dam  
**4**

Sub surface  
**9**  
dams

Rock  
**6**  
Catchment

Water Pond  
**19**

### Livelihood Support

Vaccination  
**4**  
Crush

Breed  
**6**  
Improvement

Pastoral Field  
**1**  
Schools

Poultry  
**4**  
farming

# Thank You!



## CONTACT DETAILS



*Japheth.kasimbu@igad.int*

## DATA ACCESS



<https://icpald.org/>  
<https://eahazardswatch.icpac.net/>



<http://geonode.igad.int/>  
<http://geoportal.icpac.net/>



## SOCIAL MEDIA PLATFORMS



ICPALD



ICPALD



ICPALD